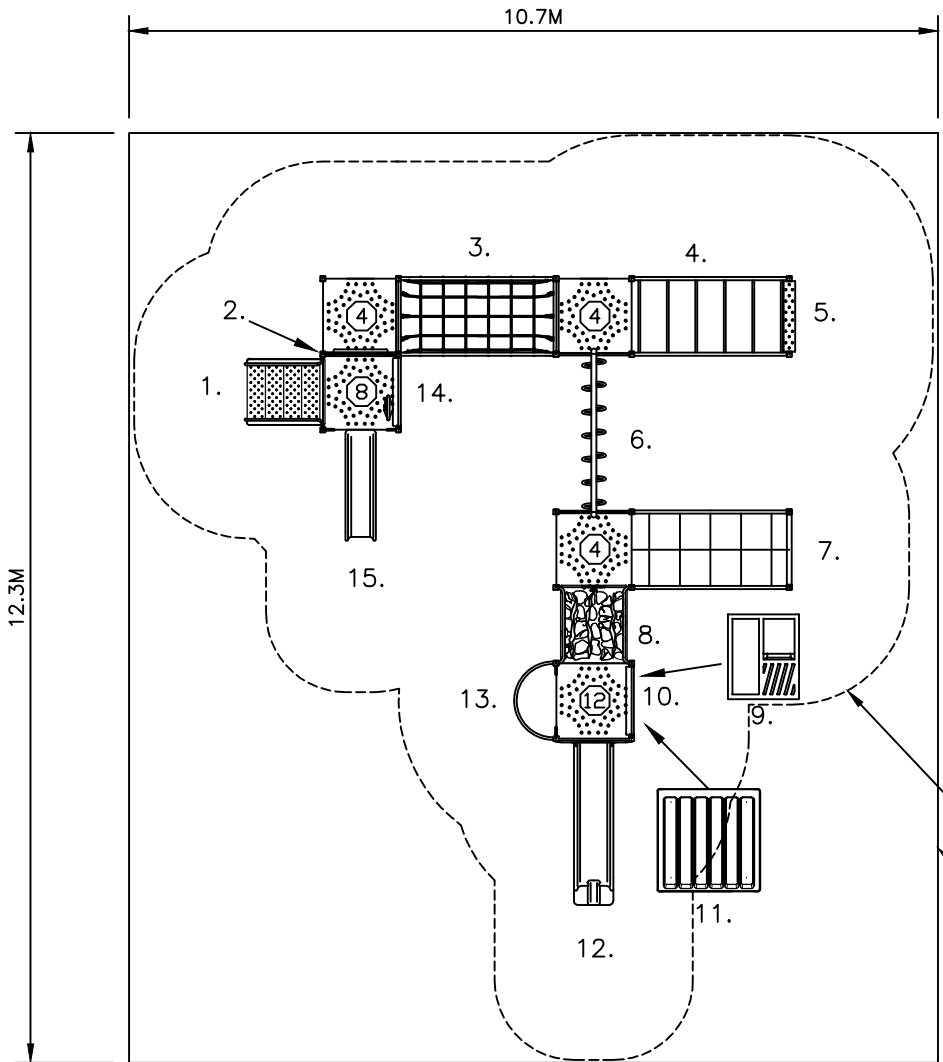


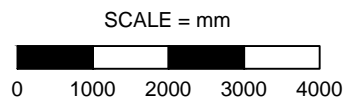
DO NOT SCALE



- 1. SAFETY STAIRS DK-GRND 800
- 2. STEP PANEL & SAFETY LOOPS
- 3. COMMANDO BRIDGE DK-DK
- 4. CHALLENGE LADDER
- 5. SAFETY STEP
- 6. RING TREK
- 7. BURMEZE ROPE BRIDGE DK-PST
- 8. ROCKY RAMBLE DK-DK 800
- 9. SHOP FRONT PANEL (UNDER)
- 10. OBLIQUE PANEL
- 11. ARC ROOF
- 12. CATERPILLAR SLIDE 1200
- 13. FIREPOLE 1200
- 14. PLASTIC OBLIQUE PANEL WITH WHEEL
- 15. CATERPILLAR SLIDE 800

SAFETY ZONE
SOFT FALL AREA

522-DAN
MAX FHF: 2.2M



APPROX AREA (sq.m.): 131.6 APPROX PERIMETER (lin.m.): 46.0

522 - DAN
EXTREME UNIT
STANDARD DRAWING

DRAWING No.: 522		REV: A
DRN: A. DYSON	SCALE 1:100	SIZE
DATE: 30/07/14	SHEET 1 OF 1	A4

- Heights above Playground surface are shown on decks and all play equipment, is. Ⓢ = 40mm
- Impact absorbing ground cover is required under and around all play equipment.
- The min. recommended fall zone around the entire play structure is shown. This zone is to be free of all tripping or collision hazards (ie. roots, rocks, border material, etc).
- Site layout and dimensions are subject to verification prior to installation.
- Dimensions in millimetres unless stated otherwise.

