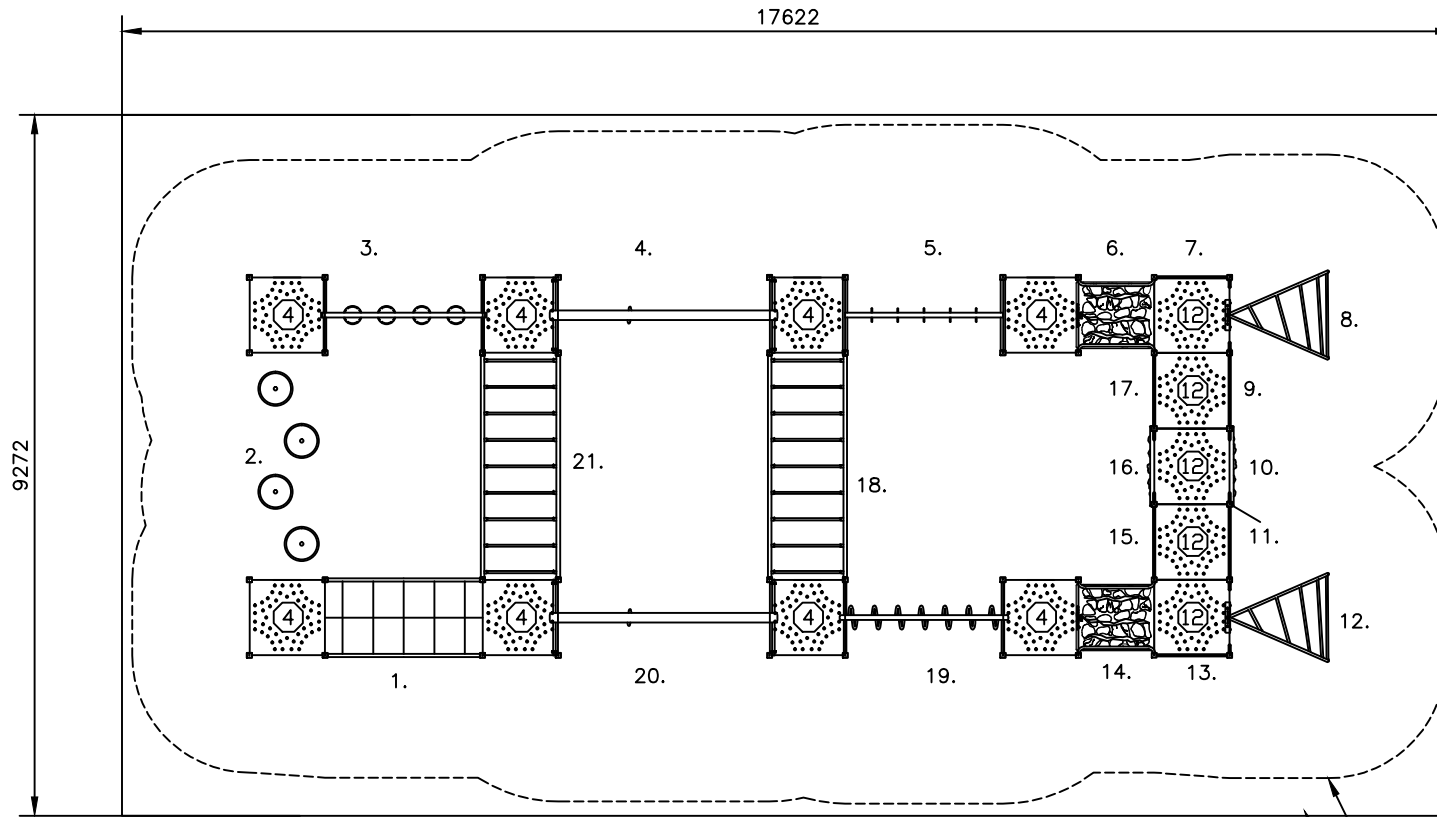


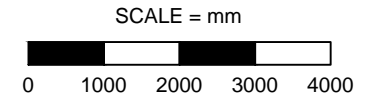
DO NOT SCALE



1. BURMESE ROPE BRIDGE
2. JUMPING JACKS x4
3. POMMEL WALK
4. TRAK RIDE 3M
5. TRAPEZE CLIMBER
6. ROCKY RAMBLE DK-DK
7. STEEL ARCH PANEL
8. TWISTER CLIMBER 1200
9. STEEL ARCH PANEL
10. ROCKWALL CHALLENGE 1200
11. STEEL ARCH PANEL
12. TWISTER CLIMBER 1200
13. STEEL ARCH PANEL
14. ROCKY RAMBLE DK-DK
15. STEEL ARCH PANEL
16. ROCKWALL CHALLENGE 1200
17. STEEL ARCH PANEL
18. 3M CHALLENGE LADDER (2M HIGH OF FSL)
19. RING TREK
20. TRAK RIDE 3M
21. 3M CHALLENGE LADDER (1.7M HIGH OF FSL)

SAFETY ZONE*
SOFT FALL AREA

503-AUSTEN
MAX FHF: 2.2M



APPROX AREA (sq.m.): 163.4 APPROX PERIMETER (lin.m.): 53.8

503 - AUSTEN
EXTREME UNIT
STANDARD DRAWING

DRAWING No.: 503

REV: A

DRN: K.NICHOLSON

SCALE 1:100

SIZE

DATE: 28/8/17

SHEET 1 OF 1

A4

- Heights above Playground surface are shown on decks and all play equipment, is. (3) = 400mm
- Impact absorbing ground cover is required under and around all play equipment.
- The min. recommended fall zone around the entire play structure is shown. This zone is to be free of all tripping or collision hazards (ie. roots, rocks, border material, etc).
- Site layout and dimensions are subject to verification prior to installation.
- Dimensions in millimetres unless stated otherwise.

